



A Path in The Woods Foundation, Inc.

124 Washington St. Wellesley, MA 02481

Helping Kids Find Their Own Path in Life

2021 ANNUAL REPORT TO DONORS

ANNUAL GOLF TOURNAMENT

This year we hosted our 13th Annual Wellesley High Alumni & Friends Golf Championship outing and fundraiser on July 23rd at Sandy Burr Country Club in Wayland. We entered the tournament again planning with cautions due to the continued impact of the Covid-19 pandemic and we were again, overwhelmed with the turnout and support. We had a record number of golfers, 106, and 18 tee-box sign sponsors. As a gift to our players, we again included a sleeve of Titleist Path Foundation golf balls and awarded several prize for low team scores, including low mixed-foursome, and high team score. We had a new low score team of Rob Kapinos, Joe Doherty, Joe & Jack McDonough with a score of 60 and twelve out of 27 teams shooting in the 60's, 13 in the 70's and 2 of our senior teams in the 80's. Next year's tournament promises to be a lot of fun for every team. It will be held on Friday July 22, 2022, at Sandy Burr Country Club. Because of the larger turnout we will need to start earlier at 9:00AM. We appreciate the continued support for this fundraising event, and we are grateful for the love and friendship it provides.



Photo from 2019 Tournament

FINANCES

In 2020 Wellesley Bank merged with Cambridge Trust, where we continue to maintain our checking account. Our balance at 12/31/2021 was \$15,553. All of our bills are paid, and we have no accounts receivable. A Path in the Woods Fund, our donor-advised field of interest fund at The Foundation for MetroWest (FMW) had a balance at 12/31/2021 of \$81,764.

GRANTS & OTHER DISTRIBUTIONS

Our financial support for the Work-study Internship Program at Wellesley High School was suspended in 2021 due to the limitations of school-work programs caused by the coronavirus. We hope to continue our efforts in 2022 to provide students who are interested in working and want an opportunity to gain hands-on work experience in a supporting environment during after-school hours. Since our first grant in 2010 we have dispersed over \$60,500 to the Wellesley Youth Commission to manage the work-study internship program. All of the grant money goes to the student interns based on a minimum hourly wage. In total, students have worked for approximately 6,000 hours. The work assignments are at various Town Departments and coordinated by the

Town's Youth Director. We have funded approximately 60 students at an average of 100 hours per student, typically within a semester. The program also exposes students to the work of local government and the potential for career choices. Once the program can be restarted, we expect to see an increase in the hourly wages based on state and town guidelines.

Our financial support for the Work-study Internship Program is directed through our donor advised, field of interest fund, A Path in the Woods Fund, at the Foundation for MetroWest, a community foundation. We are very appreciative of Foundation's support and guidance in managing our fund. Distributions from our Fund are made at our direction but are approved by the Foundation's board of directors as well. Donations to A Path in the Woods Fund can also be made directly to the Foundation for MetroWest. <https://www.foundationmw.org/>

NEW PARTNERSHIP OPPORTUNITIES

Wellesley Media Corporation Internship

We have continued our partnership with the Wellesley Media Corporation, a private non-profit organization that operates out of a studio and offices in rented space above Green's Hardware on Washington Street in Wellesley Hills. Wellesley Media is formerly known as Wellesley Community Access Cable Television. They broadcast Wellesley High School sporting events and Wellesley town government meetings on local cable TV. They produce other programs of public interest as well as public service announcements (PSA's). They are funded in part by the license fee that local cable TV providers pay the Town of Wellesley. Their funding may be reduced in the future based on changes in the FCC regulations controlling local CATV licensing agreements. We have worked previously with Wellesley Media when we filmed a PSA for a program, we called Thrive Wellesley a few years ago. Wellesley Media has also hosted several of our Wellesley High School work-study interns in the past on an intermittent basis. Using our new internship direct grant Wellesley Media's Executive Director, James Joyce, has designed a schedule that works for him and the intern over a longer period. I have a great deal of confidence in James' ability to make the internship opportunity fruitful for his organization and the student we support through our grant. In 2021 we provided a grant of \$5,000 to Wellesley Media to fund an internship for a high school or college age Wellesley student interested in a potential career in media communications to gain hands-on experience. Wellesley Public Media is a non-profit, digital mass-media access center serving the town of Wellesley, Massachusetts. Their mission is to support the education and informing of Wellesley citizens with regards to Town civic, educational, cultural, and community matters, and to enable them to use the latest tools and technologies for producing, managing, and distributing video and digital media. <http://www.wellesleymedia.org/>

In 2019, Wellesley Media produced three videos for us as a community public service. The first one helps us tell our story and talk about our mission. The second video is an interview with the people that oversee the Center for Psychiatric Rehabilitation at Boston University and the NITEO Program that we support (see below for more information). The third video is filmed at our 2019

annual golf tournament and barbeque lunch following the tournament. The video links are in the Thrive Talk page of our Web-site at: <https://apathinthewoods.org/thrive-talk>

Providing a Scholarship to the NITEO Program at Boston University

We also have a partnership with the NITEO Program at the Center for Psychiatric Rehabilitation at Boston University's Sargent College. Their relatively small facility is located at 940 Commonwealth Ave. West on the Brookline/Boston line.

NITEO is an intensive; one-semester program supporting young adults who live with a mental health condition develop wellness tools, academic skills, resilience, and work-readiness. NITEO was established in 2014, and over 140 students have graduated from the program and moved on to valued roles in their communities.

The NITEO curriculum provides students with opportunities to:

- Practice and develop resiliency skills to help them live well at school and work,
- Examine their educational, vocational, and social strengths and values, and,
- Develop an individualized path to choose, get and keep the valued roles of their choice.

All classes are held at the Center for Psychiatric Rehabilitation at Boston University; Sargent College, or on-line during parts of 2020-21, and enrolled students have access to various other University resources including the Fitness and Recreation Center. See their website for more information. <https://cpr.bu.edu/about/>

Each fall (September-December) and spring (January-May) semester, 15-19 students are invited to participate in NITEO. The semester-long program is a simulation of the college experience where students have opportunities to:

1. attend wellness and academic classes to build skills for work, and personal success;
2. build lasting relationships with same-age peers and support staff;
3. work one-on-one with an assigned College Coach for individualized support around a host of academic, vocational, social, and wellness areas.

The fee for the fall or spring semester of NITEO – classes and coaching – is \$8,500. Students need not be from BU. NITEO operates under the umbrella of the Trustees of Boston University as a 501(c)(3) so we can provide a scholarship/grant directly to the Center under IRS rules.

Courtney Joly-Lowdermilk, who manages the NITEO program at the Center, where the program is housed, said that the challenge of the NITEO program is to connect with students who are silently suffering from depression or anxiety and even psychotic behaviors. “There are any number of underlying reasons ranging from academic stress to gender identity or sexual identity,” she said. “The challenge for them, and for us, is how to engage them and keep them

engaged. “Sometimes it is as easy as getting these kids to sit around the table with other students who are experiencing similar anxiety or depression to talk about it in a safe environment. The truth is that we have to be very actively engaged and on our toes. Those good days and conversations may not last long.”

The affiliation with the NITEO program connects the Path Foundation with a professional college-based program that is focused on the same 18 to 24-year-old demographic that is at a higher risk of failing to thrive.

There is no formula, says Joly-Lowdermilk. It is young adult to young adult, day to day, crisis to crisis. NITEO is engaging more directly with families of these young adults in the course of their approach, understanding that the family role is potentially critical. Her ‘boiled down’ tenets:

- Self-care is not selfish. The process requires exploring routine, resources, recovery, and a respite for personal wellbeing.
- We all need the right tools in our toolkit – kids, parents, counselors – to have these difficult conversations if we are going to make a difference and pull these kids out of their trajectories. The tools we have used in the past may not work anymore.
- Shift away from ‘shame and blame.’ It hasn’t worked in the past and it is unlikely to work in the future.
- Listen, don’t talk, when you can be in a conversation with someone who is struggling.

“Give them the space to feel and say what they are thinking,” she says. “They are not looking to us to fix them as much as they are looking to us to listen to them. We can help fix them along the way, but what they want at first is trust and a safe place to say things they have never said to another adult before.”

In 2021 we provided a grant to Center for Psychiatric Rehabilitation at Boston University of \$5,000 to help them engage their programming more directly with families and help them learn what’s needed to support their teen who is struggling with mental health challenges. Since our partnership with the Center began in 2018, we have donated \$18,500 to the NITEO program.

In 2019, we were very excited to announce that we are going to co-sponsor, with the Center, the showing of Andrew Gibson’s film *Gutterbug* <https://www.gutterbugmovie.com/> at BU’s Tsai Performance Center. The showing was originally scheduled to be April 16, 2020 and was to include a Q&A with Andrew and a few of his fellow filmmakers. Due to the coronavirus, we were not able to hold the event. Our intention was to make the event free to all and welcome donations through our Website. Andrew Gibson is a talented young filmmaker and supporter of the Path Foundation. The film, which was shot in Allston, has already won several film-festival awards from Woods Hole to Los Angeles to Alaska. The Gibson family have been life-long friends from Wellesley and we are pleased to be able to support Andrew. We had planned to have proceeds from the film’s showing be donated to the Center in the form of a student scholarship to the NITEO

program. We will continue to work with the Center to develop a way to integrate the showing of *Gutterbug* into the NITEO family's program to foster open discussion about challenges of maintaining a healthy relationship between teenagers and their families.

OUR MISSION AND OUR HISTORY

A Path in The Woods Foundation, Inc. is a non-profit, charitable organization was created in 2009 in memory of Daniel McCabe of Wellesley, MA. The foundation is dedicated to opening new doors of opportunity and exploration for the young men and women in our community and beyond who are searching for their path in life and need assistance, financial or otherwise in beginning their journey. The foundation raises funds through community-based events and through direct contributions. The funds are used to provide grants for young adults for training and education related to developing job skills and building self-confidence.

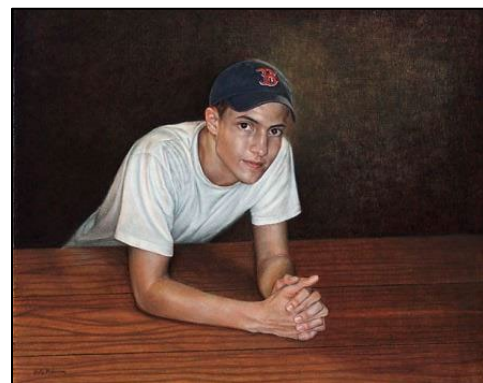
The foundation is organized exclusively for charitable and educational purposes, including, for such purposes, the making of distributions to organizations that qualify as exempt organizations under section 501(c) (3) of the Internal Revenue Code, or corresponding section of any future federal tax code. Each year A Path in The Woods Foundation continues to advance its mission through programs such as providing work-study internship grants for Wellesley High School students through a grant to the Wellesley Youth Commission dispersed by A Path in the Woods Fund, a fund of the Foundation for MetroWest, a community foundation.

Thanks for all your support these last 13 years.

In 2021 we launched our new website. Check it out.

Website: <http://apathinthewoods.org/>

A Path in the Woods Foundation was featured in the December 2021 issue of **Wellesley Living Well** magazine, with an article co-written by Ernie Corrigan and Gary McCabe. A copy of the article can be found on our website on the Thrive Talk page.



|| Dan McCabe by Holly Bedrosian

Please let me know if you have any questions or would like to talk about our internship grant program.

Gary J. McCabe, President

Email: thepathfoundation@comcast.net